



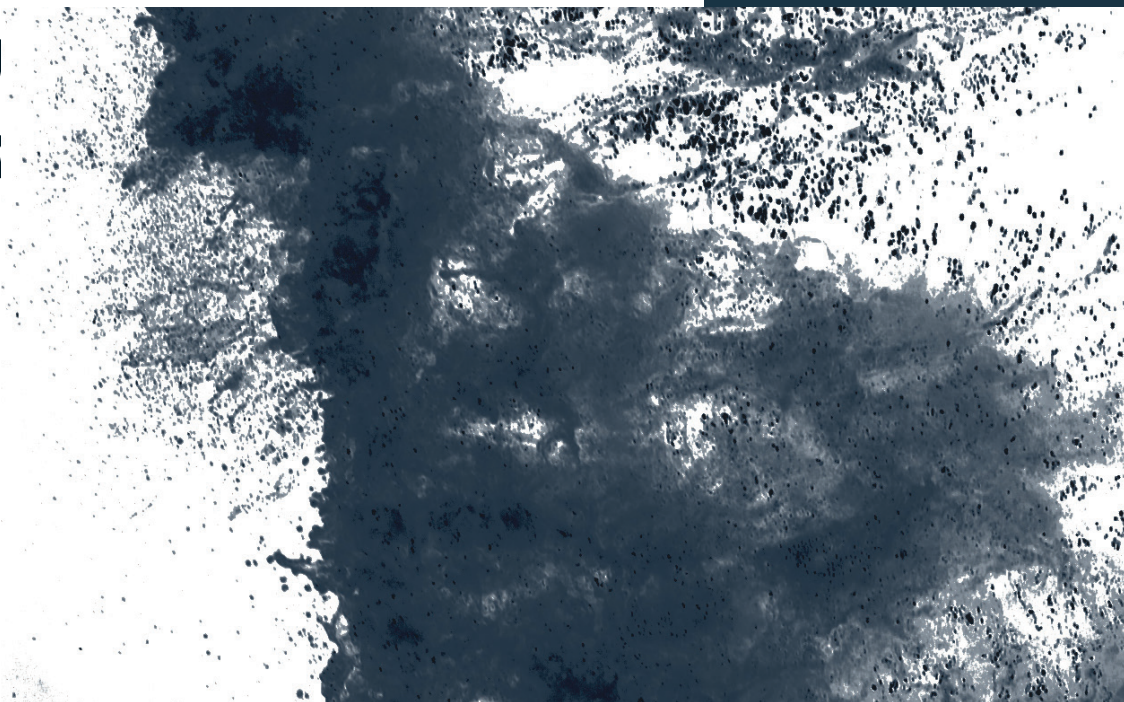
DRIVE THE SEA.

Strider

13



*Each model comes from a
thought, from a pencil that flows
on a sheet and comes to life
thanks to the passion for unique
and brilliant design that has
always distinguished*



SACS



Design and architectural elements with a sharp attitude: this is the Sacs mix.

Under the aspiration of a visionary strategy, Sacs has traced the new trends in the sector by inaugurating the era of the maxiribs, which combine the comfort and safety of ribs, with the luxury and design of the yacht.

Sacs Owner is a daring enthusiast with a dynamic, smart, contemporary lifestyle.

He wants to own something special and unique that can be separated from the rest, from the masses, from the crowd. He is always looking for his own personal way of living the sea, dominating the waves and fell the taste of freedom.

Sacs, Drive the SEA.

Made in Italy
since 1989



Sacs excellence shapes your thoughts.
Each Sacs is a unique masterpiece, created following the
wishes and needs of the Customers.

The most advanced technologies in the sector combined
with the italian craftsmanship strengthened by passion and
thirty years of experience, make the most of each boat,
ensuring excellent performance, in total safety.

Models



Rebel



A new nautical concept to experience the sea: Rebel has re-written the rules. BORN TO REBEL.

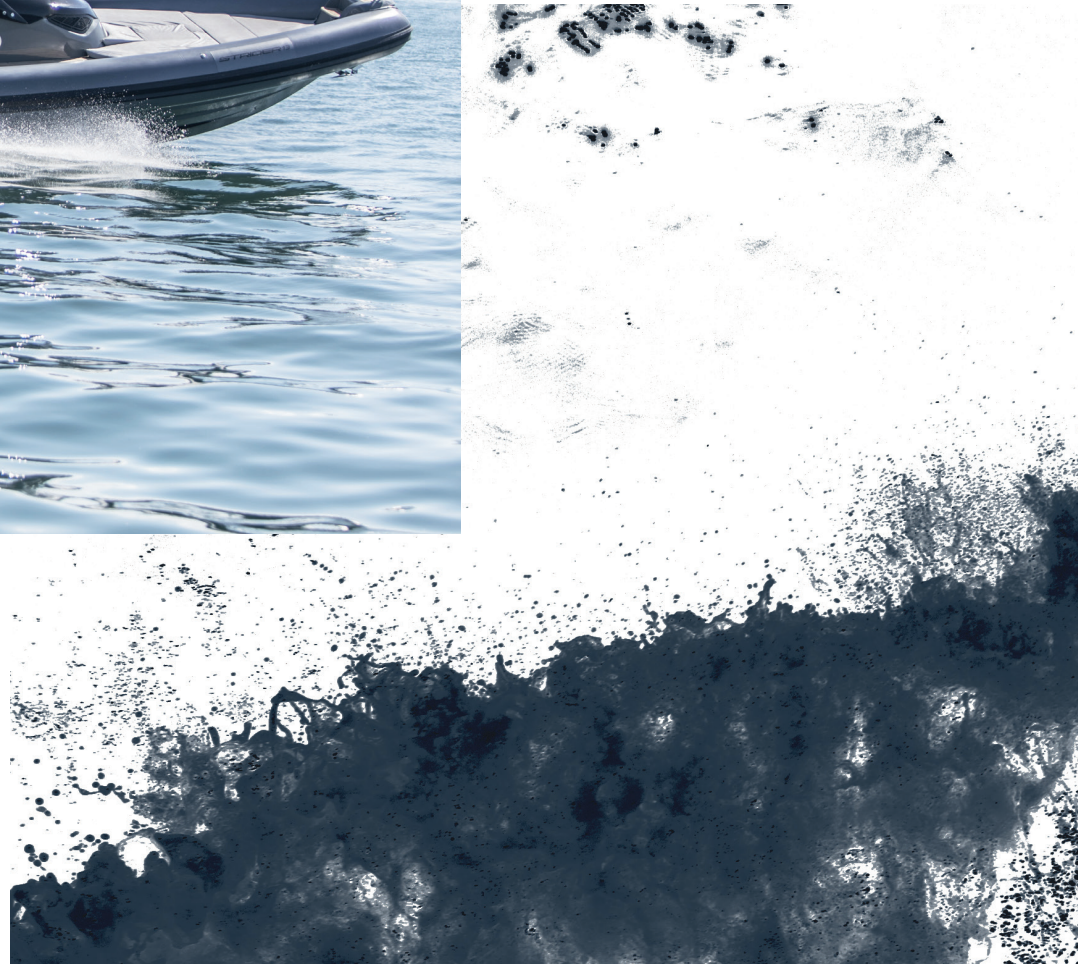
Strider



Performance, design and comfort, combined with a surprising personality. However you want to experience the sea, there is the perfect rib for you. NO LIMITS TO YOUR DREAM.

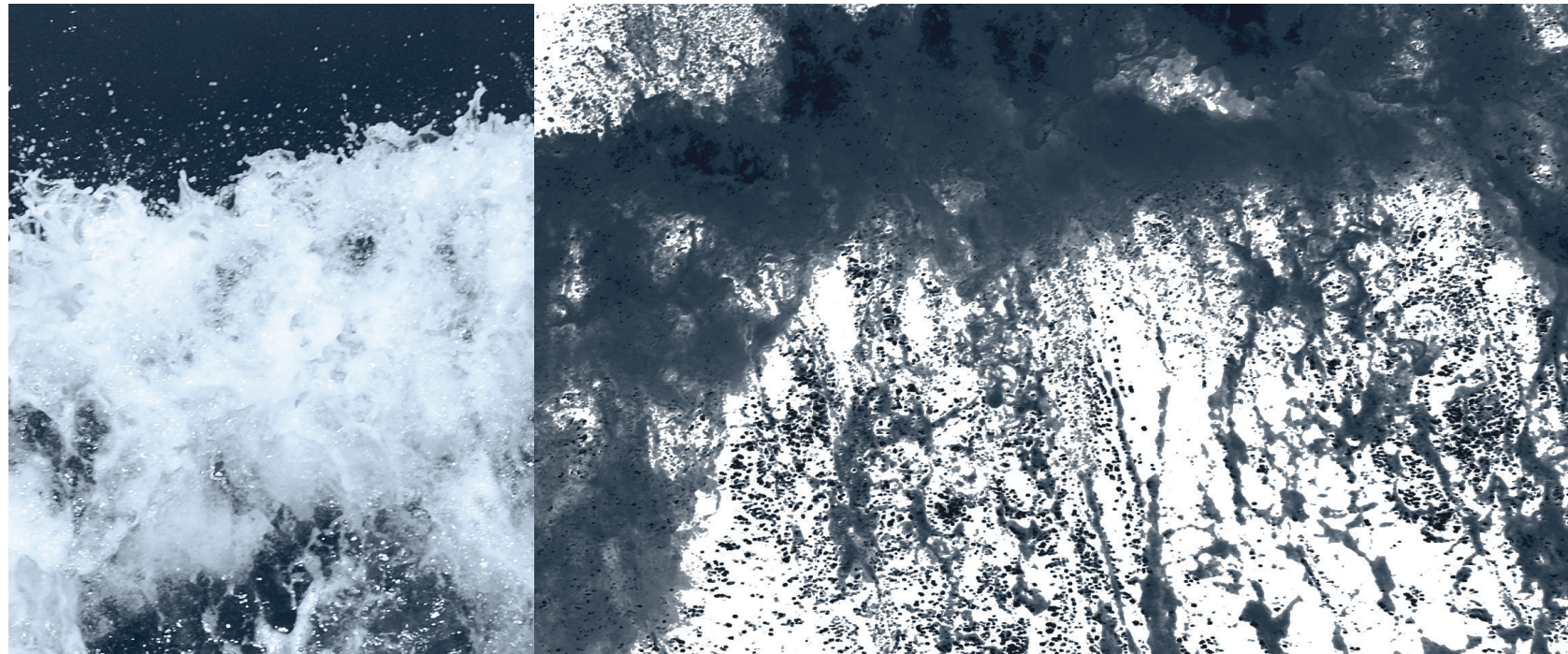
Strider 13





Strider 13

Unique, irresistible, adventurer



Its unique console attracts glances with its imposing looks. It is ideal for a sporting owner seeking a high performance and spacious boat, but it is also perfect as a “chase boat” or a tender for a maxi yacht.

633kW
Maximum installable
power

45kn
Maximum speed

16
Persons capacity

*The values refer to the tests performed in optimal weather conditions with the boats equipped with the inboard suggested engine.



Comfortable and stylish bow master stateroom with double bed



All in *details*

Each Sacs boat reflects the style of its Owner, even in the smallest details. A professional team accompanies the Owner in the configuration process and choice of the wide range of fine essences, refined textures and design accessories.

Bathroom area with rain shower and toilet





Details: teak walkway to the deck



Bow spacious sundeck

Deck view with enjoyable living area, adjustable table, food&beverage storages



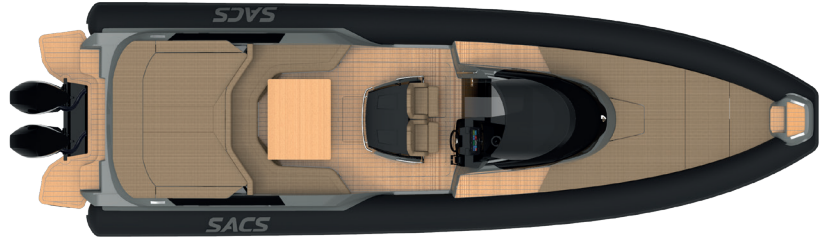
Details: carbon fiber sport top



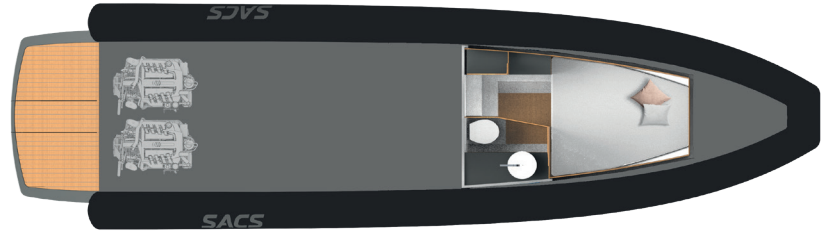
Side
OUTBOARD



Main deck
OUTBOARD



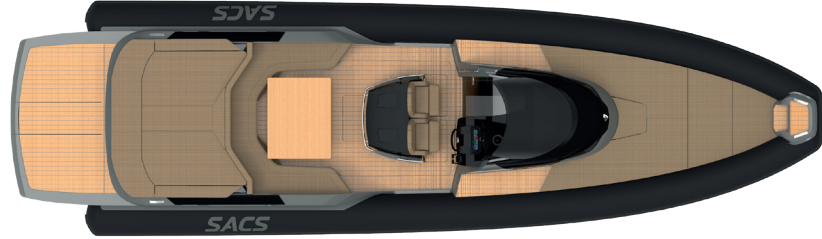
Lower deck



Side
INBOARD

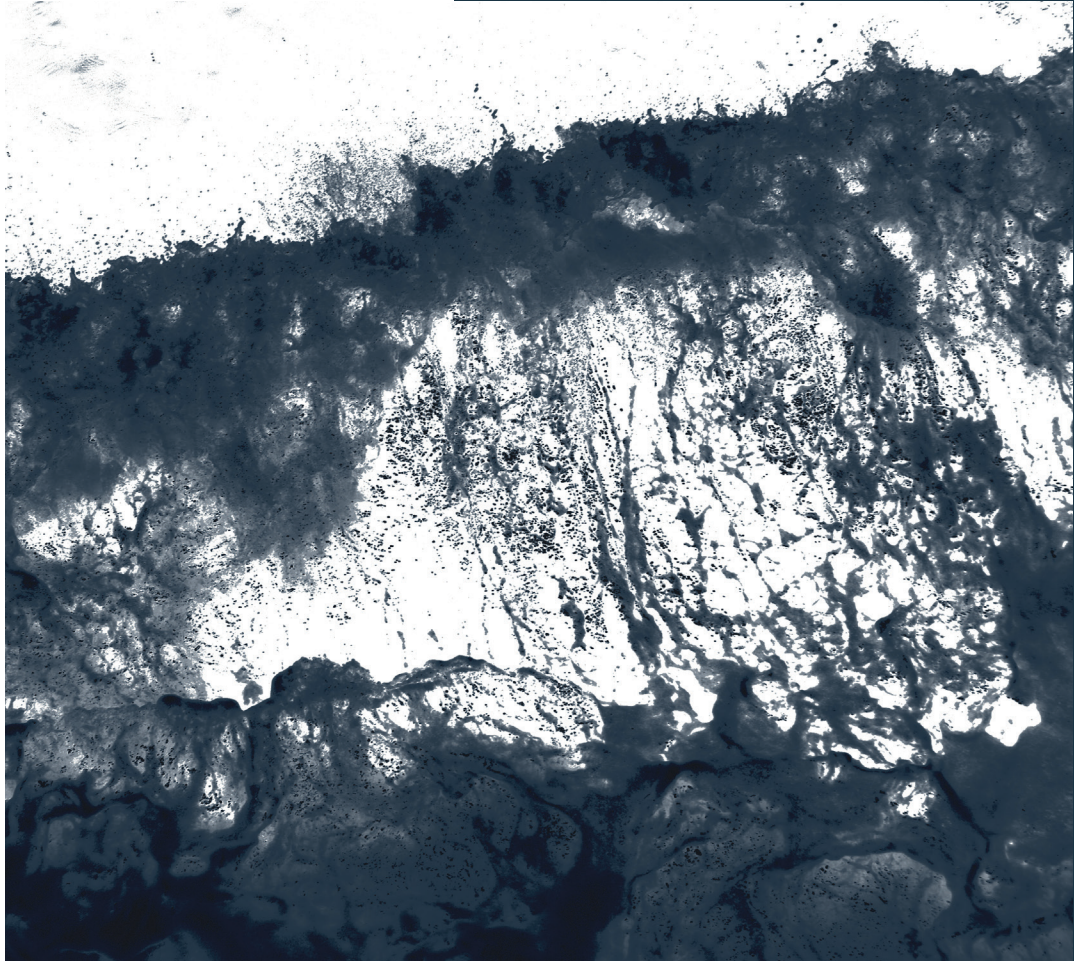


Main deck
INBOARD



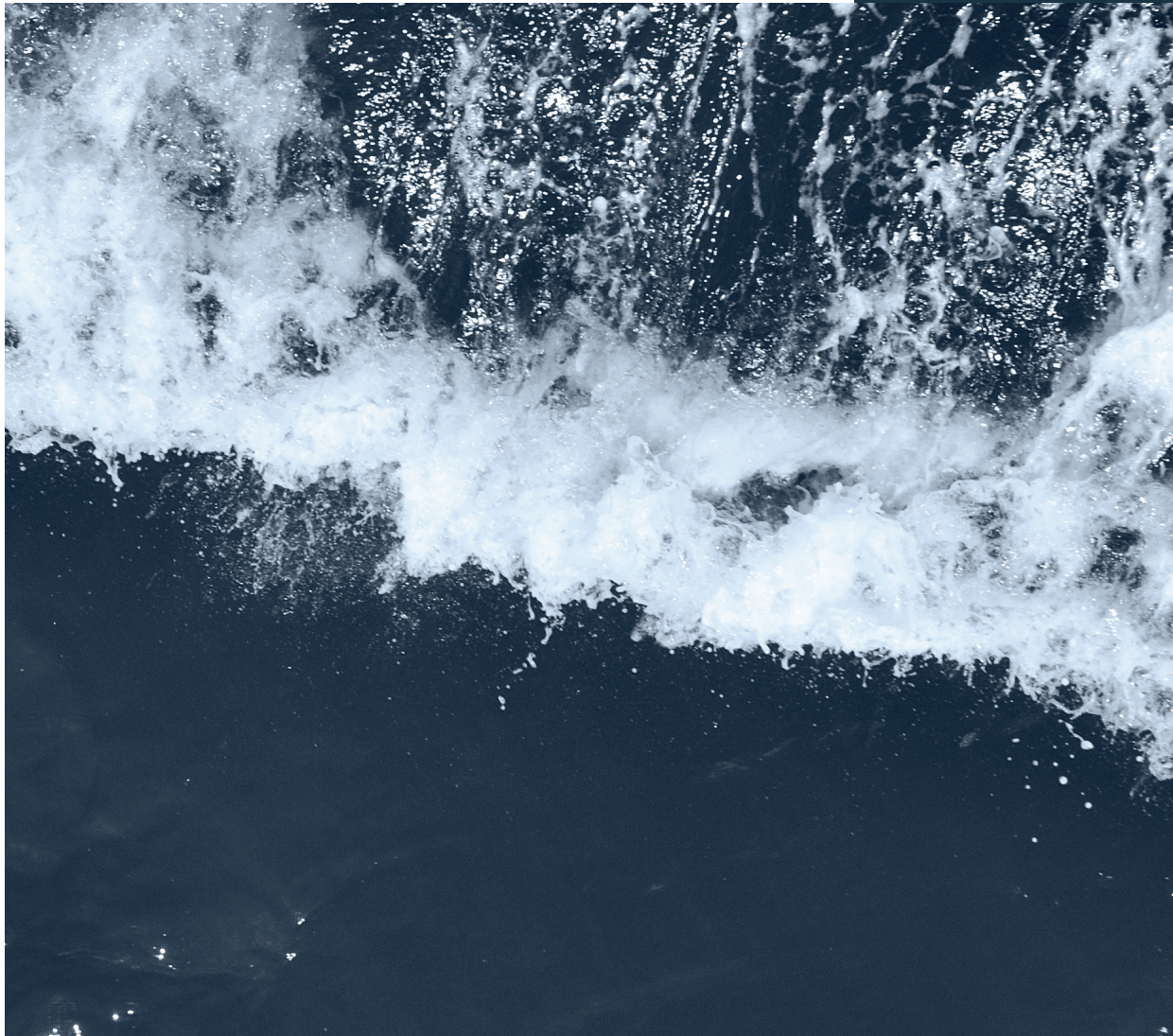
Technical specifications: *Strider 13*

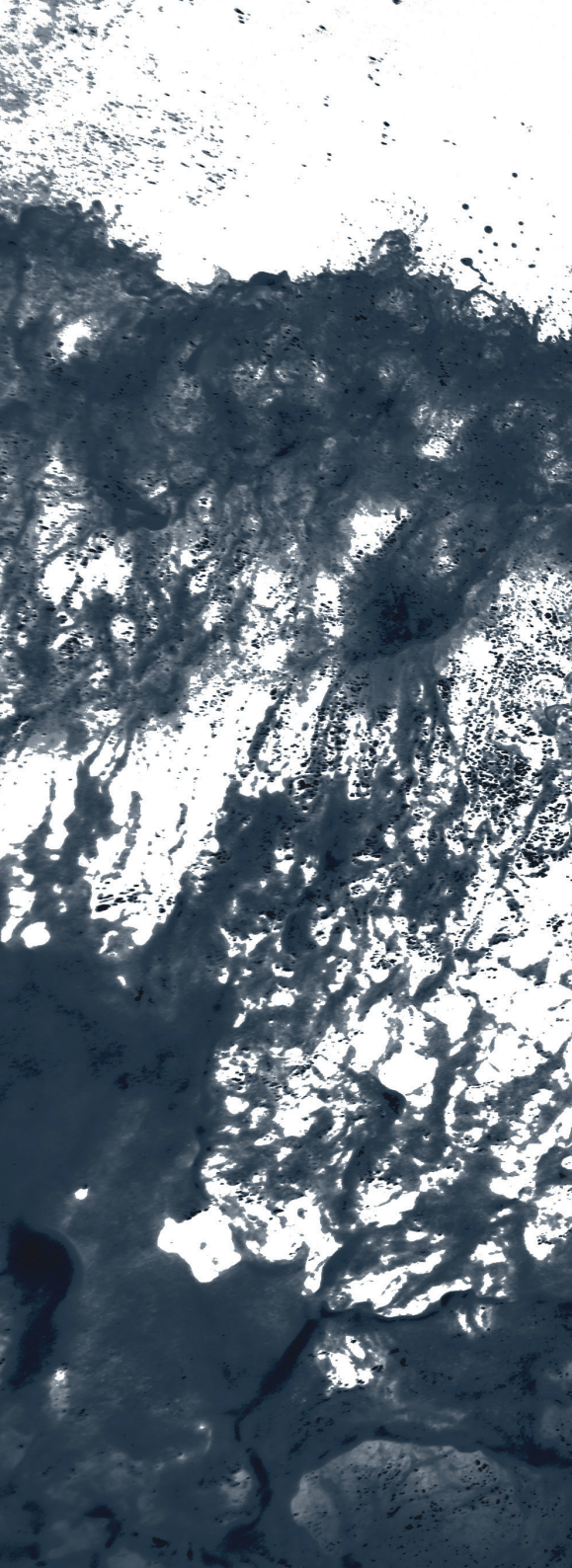
	OUTBOARD	INBOARD
Overall length	13,43 m	13,38 m
EC certifying length	11,98 m	
Max beam	3,98 m	
Draft (to the prop)	0,70 m (0,90 m)	0,70 m (1,00 m)
Tubes	70 cm	
Number of tubes compartment	8	
Hull type	Deep V Hull	
Dead rise	23,2°	
Dry weight with standard engines	5,9 t	6,6 t
Fuel tank capacity	1000 L	
Water tank capacity	170 L	
Waste tank capacity	40 L	
Homologation category	CE - B	
Persons capacity	16	
Sleeping accommodation	2 + 2 Opt	2
Maximum installable power	662 kW	633 kW
Suggested engine	2 x Mercury 450 hp	2 x Volvo D6 380 hp Diesel
Transmission	Outboard	Stern Drive
Max speed	52 kn	45 kn
Cruise speed	30 - 34 kn	28 - 32 kn
Consumption (speed)	100 L/H (30 kn)	68 L/H (28 kn)
Range at cruising speed	300 NM	415 NM
Design	Christian Grande DesignWorks	
Project	SACS	



The Characteristics of the boats are provided as example only. Furthermore, under any circumstances the above mentioned descriptions shall not represent an element to be used as assessment of conformity of the boats, including matters pursuant to the European directive EC 00/44.

As part of the strategy of constantly updating the technical and styling features of the boat, SACS reserves the right to amend the features of its boat at any time. The Customer must therefore carefully verify the features of the boat with SACS Salesforce before placing his order.





Via Don Locatelli, 49
20877 Roncello (MB)
Italia

Tel: +39 039 6885489
Email: info@sacsmarine.it
www.sacsmarine.it



@SACS Sacsmarine



@OfficialSacsMarine



@sacsmarine_official