




DRIVE THE SEA.

Via Don Locatelli, 49  
20877 Roncello (MB)  
Italia

Tel: +39 039 6885489  
Email: [info@sacsmarine.it](mailto:info@sacsmarine.it)  
[www.sacsmarine.com](http://www.sacsmarine.com)

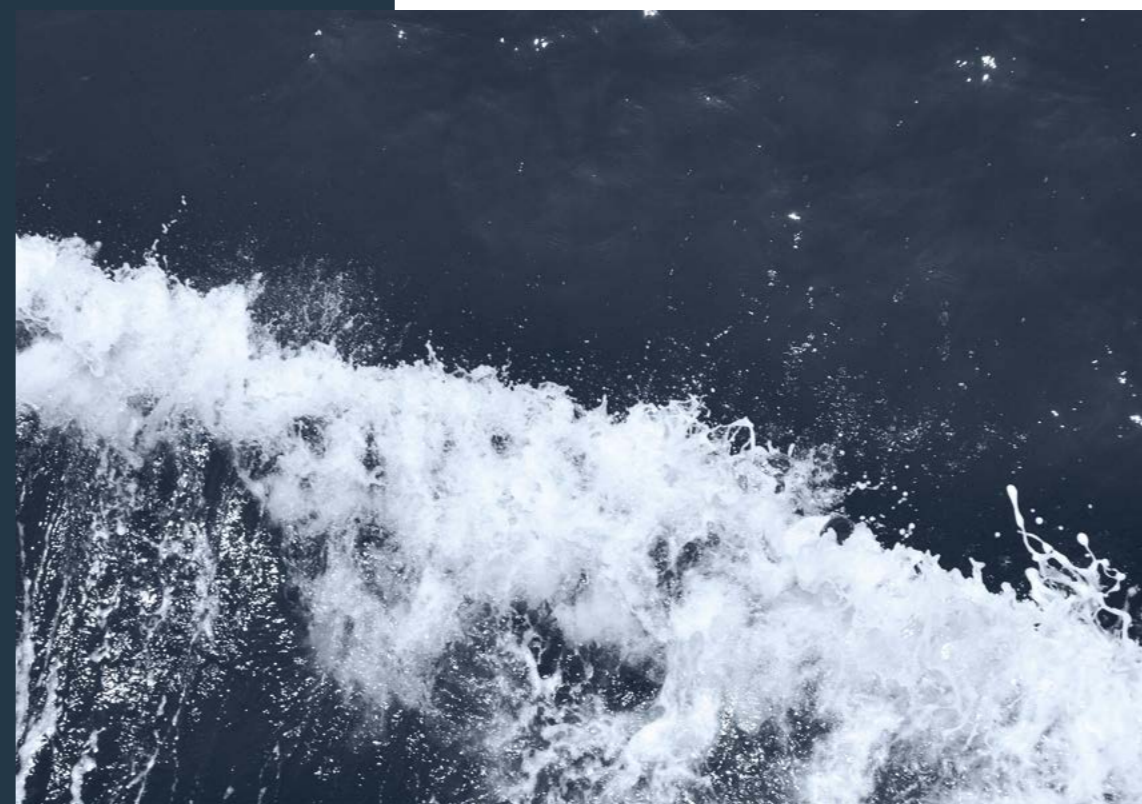
SACS - Rebel 47

 @SACS Sacsmarine

 @OfficialSacsMarine

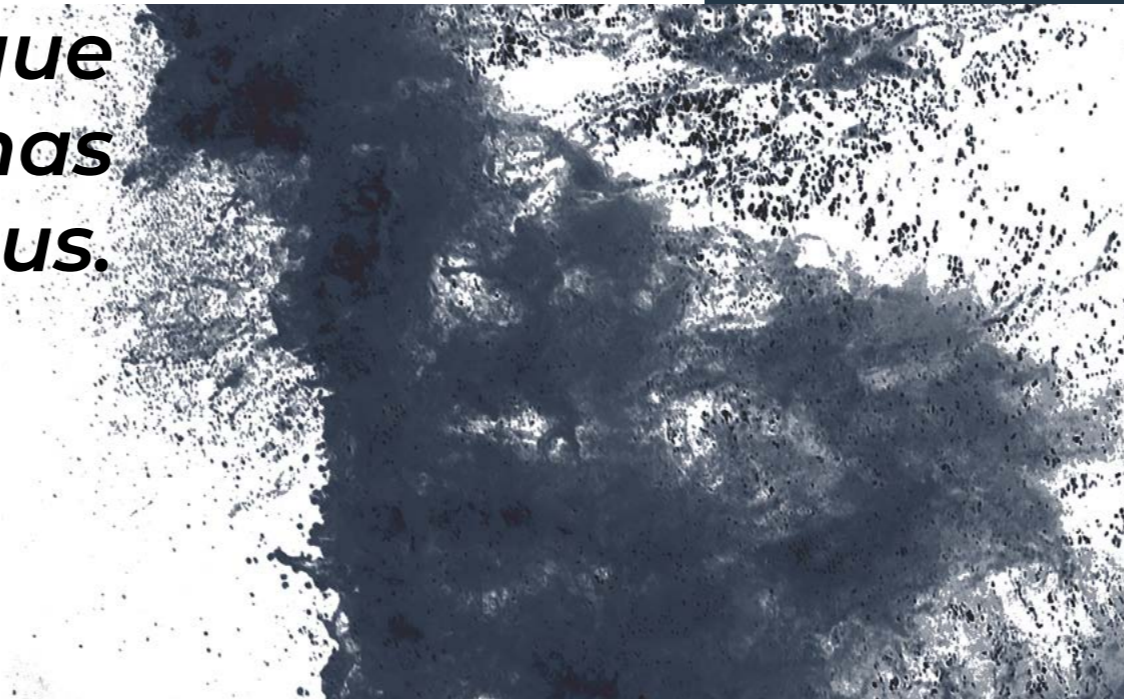
 @sacsmarine\_official

Rebel  
**47**





*Each model comes from a thought, from a pencil that flows on a sheet and comes to life thanks to the passion for unique and brilliant design that has always distinguished us.*



**SACS**

# *Design and architectural elements with a sharp attitude: this is the Sacs mix.*

Under the aspiration of a visionary strategy, Sacs has traced the new trends in the sector by inaugurating the era of the maxiribs, which combine the comfort and safety of ribs, with the luxury and design of the yacht.

Sacs Owner is a daring enthusiast with a dynamic, smart, contemporary lifestyle.

He wants to own something special and unique that can be separated from the rest, from the masses, from the crowd. He is always looking for his own personal way of living the sea, dominating the waves and feel the taste of freedom.

Sacs, Drive the SEA.



**Made in Italy**  
**since 1989**



Sacs excellence shapes your thoughts.  
Each Sacs is a unique masterpiece, created following the wishes and needs of the Customers.

The most advanced technologies in the sector combined with the italian craftsmanship strengthened by passion and thirty years of experience, make the most of each boat, ensuring excellent performance, in total safety.



# Models



## Rebel



A new nautical concept to experience the sea: Rebel has re-written the rules. BORN TO REBEL.

## Strider



Performance, design and comfort, combined with a surprising personality. However you want to experience the sea, there is the perfect rib for you. NO LIMITS TO YOUR DREAM.



# Rebel 47



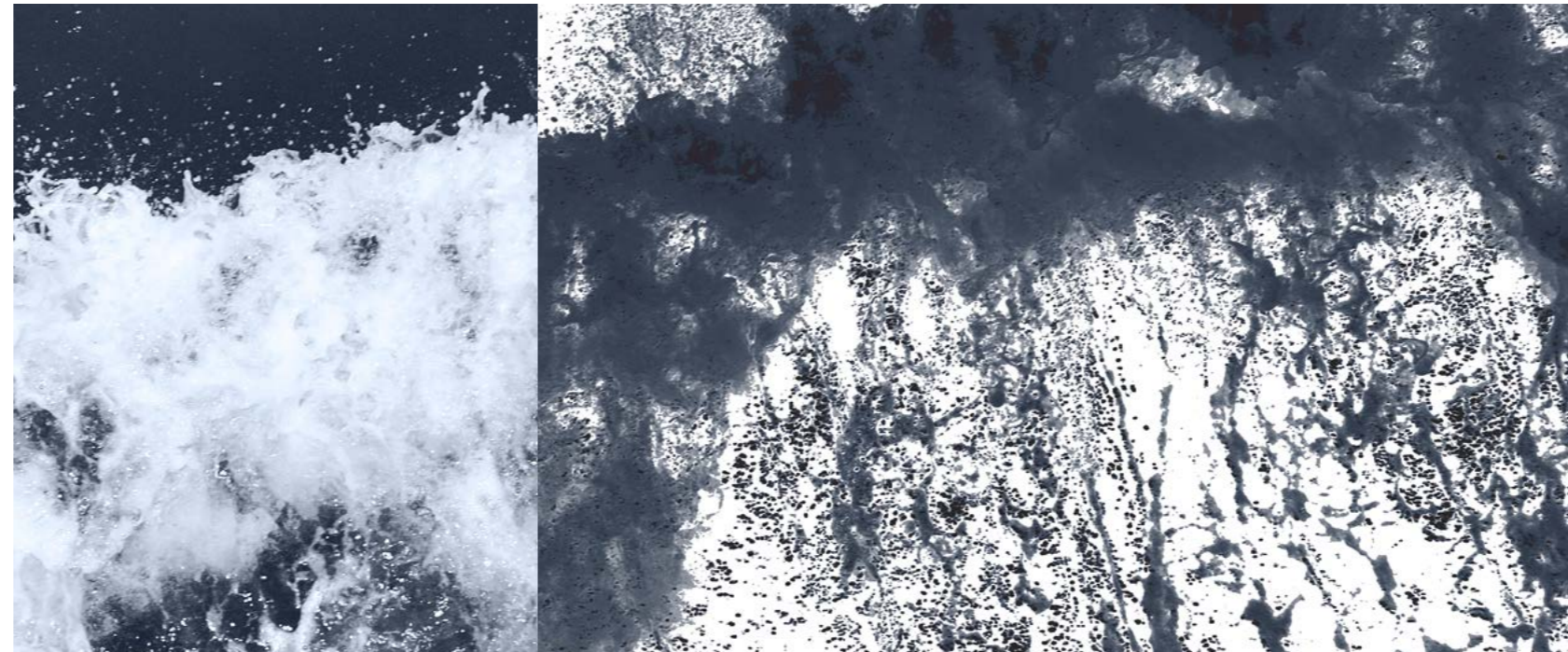






# **Rebel 47**

## The Ribs revolution: safety and comfortable



An innovative project that is able to express great and modern design, combined with incredible stability and navigation qualities. Rebel is a luxury cruiser and a muscular boat at the same time.

**648kw**  
Maximum installable  
power

**38kn**  
Maximum Speed

**18**  
Persons capacity

\*The values refer to the tests performed in optimal weather conditions with the boats equipped with the inboard suggested engine.







# Outboard

Detail: carbon fiber Hard Top







Lounge cockpit



The sea view terrace of stern



The wide side decks

# Outboard



Bow living: comfortable sofa and super queen size bed



Stern guest stateroom with double bed



## All in *details*

Each Sacs boat reflects the style of its Owner, even in the smallest details. A professional team accompanies the Owner in the configuration process and choice of the wide range of fine essences, refined textures and design accessories



Bathroom area with separate rain shower and toilet

Bathroom stylish accessories





Bow relaxing area with two ergonomic chaise-longues



Elegant dashboard with touchscreens.  
Three forward-facing captain's seats





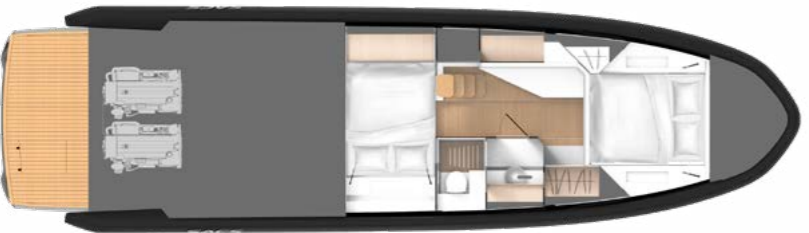
Side  
INBOARD



Main deck  
INBOARD



Lower deck



Side  
OUTBOARD



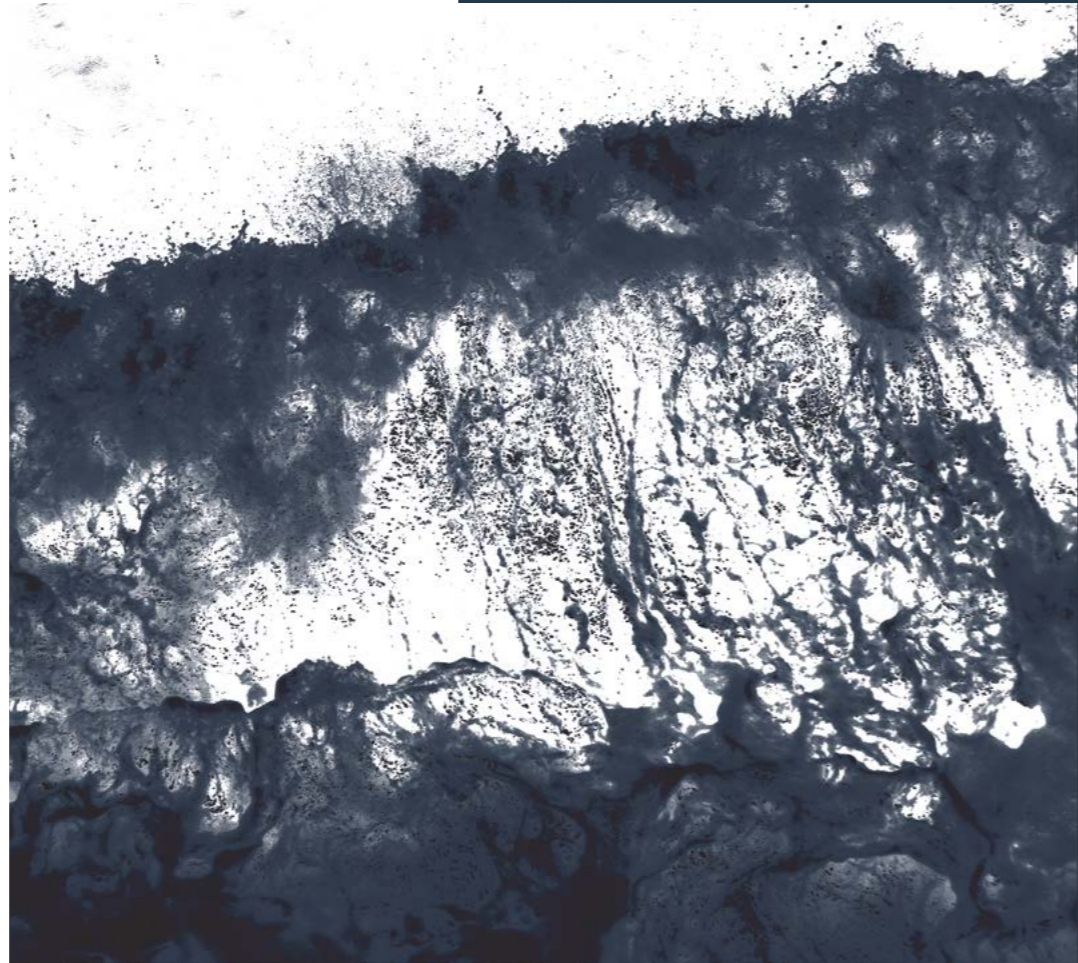
Main deck  
OUTBOARD



# Technical specifications: Rebel 47

|                                  | INBOARD                             | OUTBOARD                     |
|----------------------------------|-------------------------------------|------------------------------|
| Overall length                   | 14,06 m                             | 14,30 m                      |
| EC certifying length             |                                     | 13,07 m                      |
| Max beam                         |                                     | 4,41 m                       |
| Draft (to the prop)              | 0,70 m (1,00 m)                     | 0,70 m (1,15 m)              |
| Tubes                            | D Shape<br>(foam filled antischock) |                              |
| Hull type                        | V Hull                              |                              |
| Dead rise                        | 19,2°                               |                              |
| Dry weight with standard engines | 12,0 t                              | 11,5 t                       |
| Fuel tank capacity               | 2 x 750 L                           |                              |
| Water tank capacity              | 220 L                               |                              |
| Waste tank capacity              | 52 L                                |                              |
| Homologation category            | CE - B                              |                              |
| Persons capacity                 | 18                                  |                              |
| Sleeping accommodation           | 4                                   |                              |
| <b>Maximum installable power</b> | <b>648 kW</b>                       | <b>1324 kW</b>               |
| <b>Suggested engine</b>          | <b>2 x Volvo D6 440 hp</b>          | <b>3 x Yamaha 425 hp XTO</b> |
| <b>Transmission</b>              | <b>Stern Drive</b>                  | <b>Outboard</b>              |
| <b>Max speed</b>                 | <b>38 kn</b>                        | <b>50 kn</b>                 |
| <b>Cruise speed</b>              | <b>26 - 30 kn</b>                   | <b>28 - 32 kn</b>            |
| <b>Consumption (speed)</b>       | <b>100 L/h (26 kn)</b>              | <b>150 L/h (28 kn)</b>       |
| <b>Range at cruising speed</b>   | <b>390 M</b>                        | <b>280 NM</b>                |
| Design                           | Christian Grande DesignWorks        |                              |
| Project                          | SACS                                |                              |





The Characteristics of the boats are provided as example only. Furthermore, under any circumstances the above mentioned descriptions shall not represent an element to be used as assessment of conformity of the boats, including matters pursuant to the European directive EC 00/44.

As part of the strategy of constantly updating the technical and styling features of the boat, SACS reserves the right to amend the features of its boat at any time. The Customer must therefore carefully verify the features of the boat with SACS sales force before placing his order.



