

# BGX70

BEST IDEAS  
COME FROM  
UNEXPECTED  
COMBINATIONS.





FOR  
**BLUEGAMERS**  
ONLY.





BEST IDEAS  
COME FROM  
UNEXPECTED  
COMBINATIONS.



I ' M U N E

X P E C T E D



LENGTH OVERALL (LOA)

21,86 m 71 ft 7 in

BEAM

5,60 m 18 ft 3 in

DRAFT @ FULL LOAD

1,60 m 5 ft 2 in

FUEL CAPACITY

4.200 l 1.109 gals

MAX SPEED

30 kn

CRUISE SPEED

27 kn

SURPRISING IS  
WHAT I DO BEST.

My design is revolutionary  
and my layout has never been seen  
before within a 70-foot yacht.





I'm an ambitious, transversal  
and unexplored concept.  
I'm conceived for the Bluegamers who chase  
a deep connection with the sea.







## BGX SPIRIT DEEP IN THE SOUL.

Embodiment of the indomitable BGX spirit through a distinctive design combined with cutting-edge technology and countless innovations.





I'M FREE FROM  
CONVENTIONAL  
CATEGORIES.

I push beyond the concept  
of owner-centric comfort boat.



My uniqueness stands out.  
I've been awarded  
as Most Avant-Garde Yacht 2019  
and as Best Custom Yacht 2020.

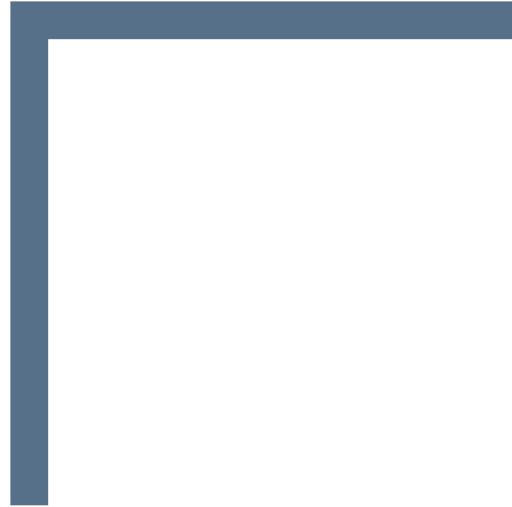




# INVITATION TO A TOTAL SEA SENSATION.

Escape to one of my relaxing outdoor lounges and enjoy the spectacular view of the blue.





# COMFORT AND STYLE ABOARD.

I invite you to relax  
in the coolest setting.





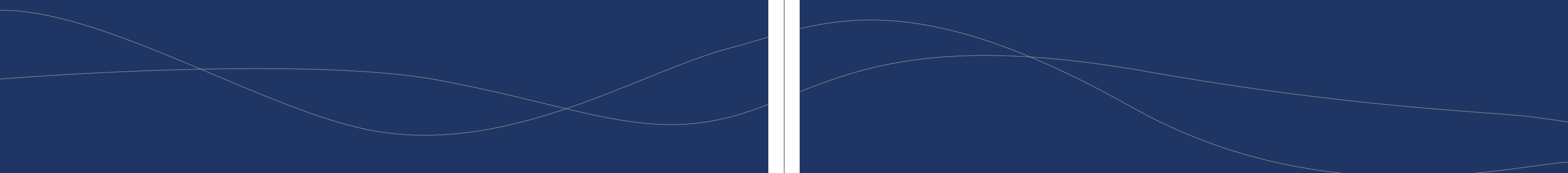


WITH ME  
EVERYTHING  
IS AMPLIFIED.

Space, functionality and, above all,  
the pleasure of experiencing  
the sea at 360°.



I' M S O P H I S T I C A T E D

The image features a dark blue background with a vertical white line down the center. The text 'I' M S O P H I S T I C A T E D' is centered horizontally in a light gray, spaced-out font. Below the text, there are several thin, light gray wavy lines that span the width of the image, creating a decorative, flowing effect.





CAN YOU  
IMAGINE A  
BETTER VIEW?

With me, the sea is always  
at your fingertips, even inside.



A real Bluegamer should never compromise between the power and the maximum comfort of life on board.





My outdoor and indoor living spaces  
break with the known, meet  
and open to each other seamlessly,  
for a barrier-free immersive experience.

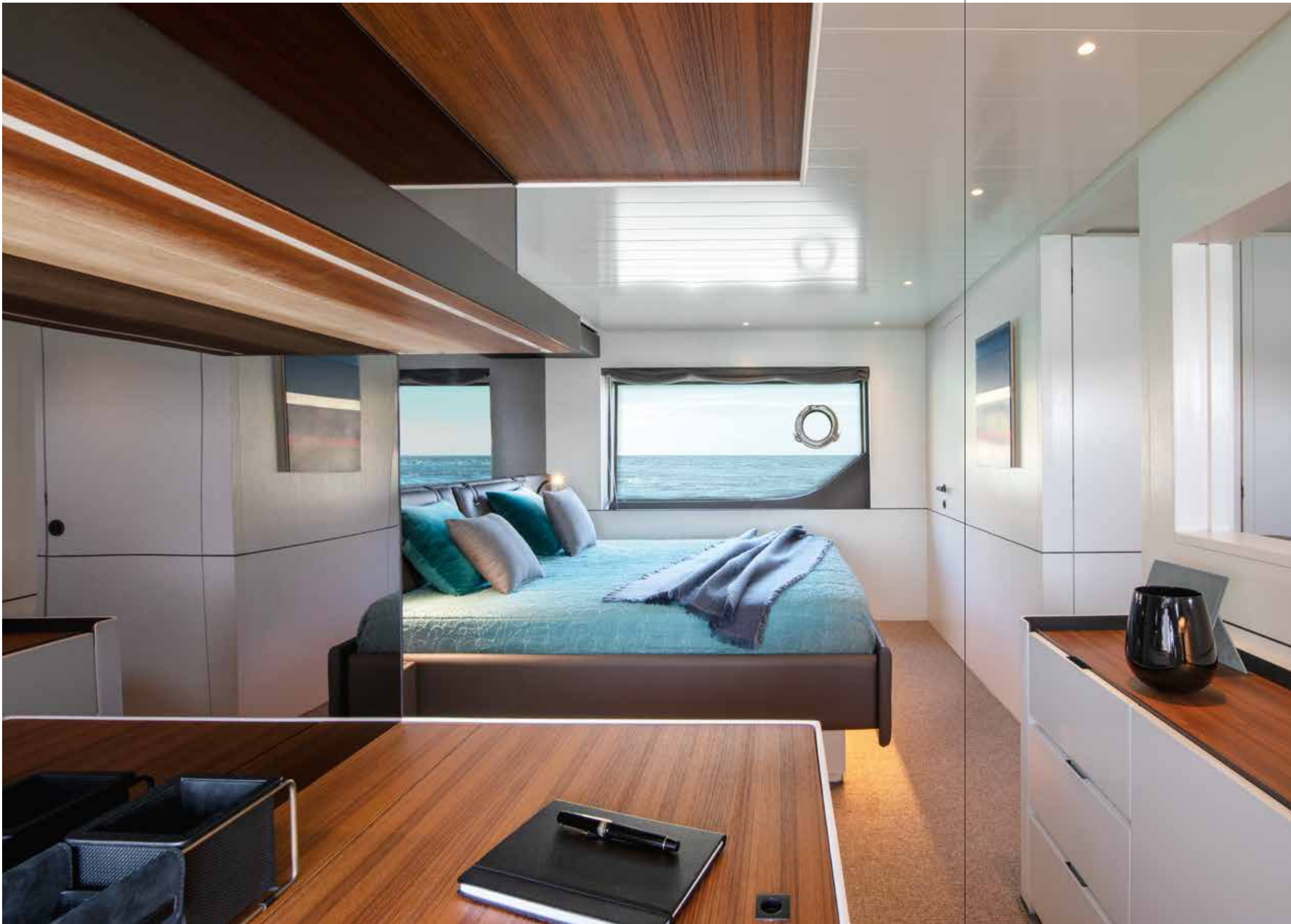


I ' M

C O O L

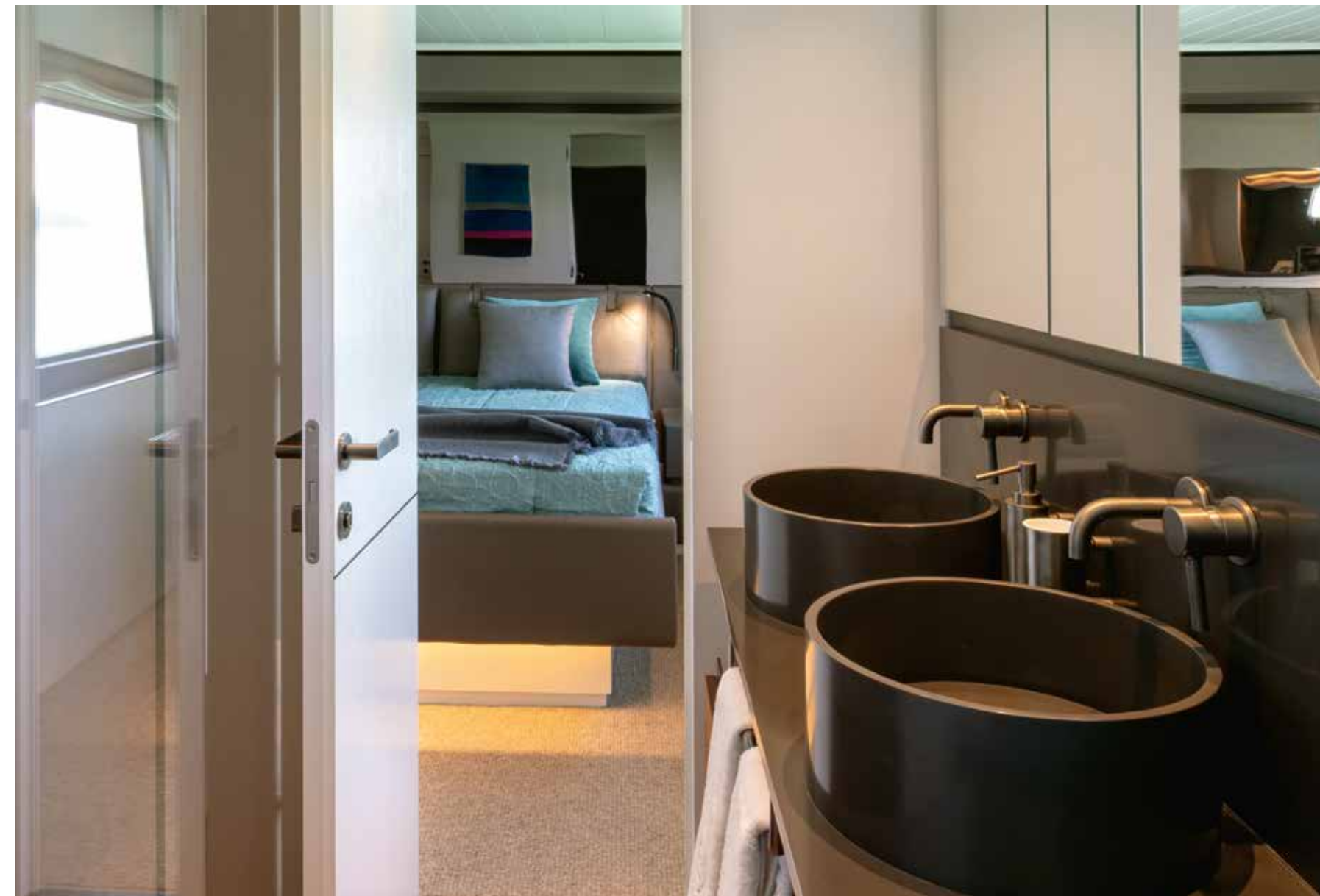
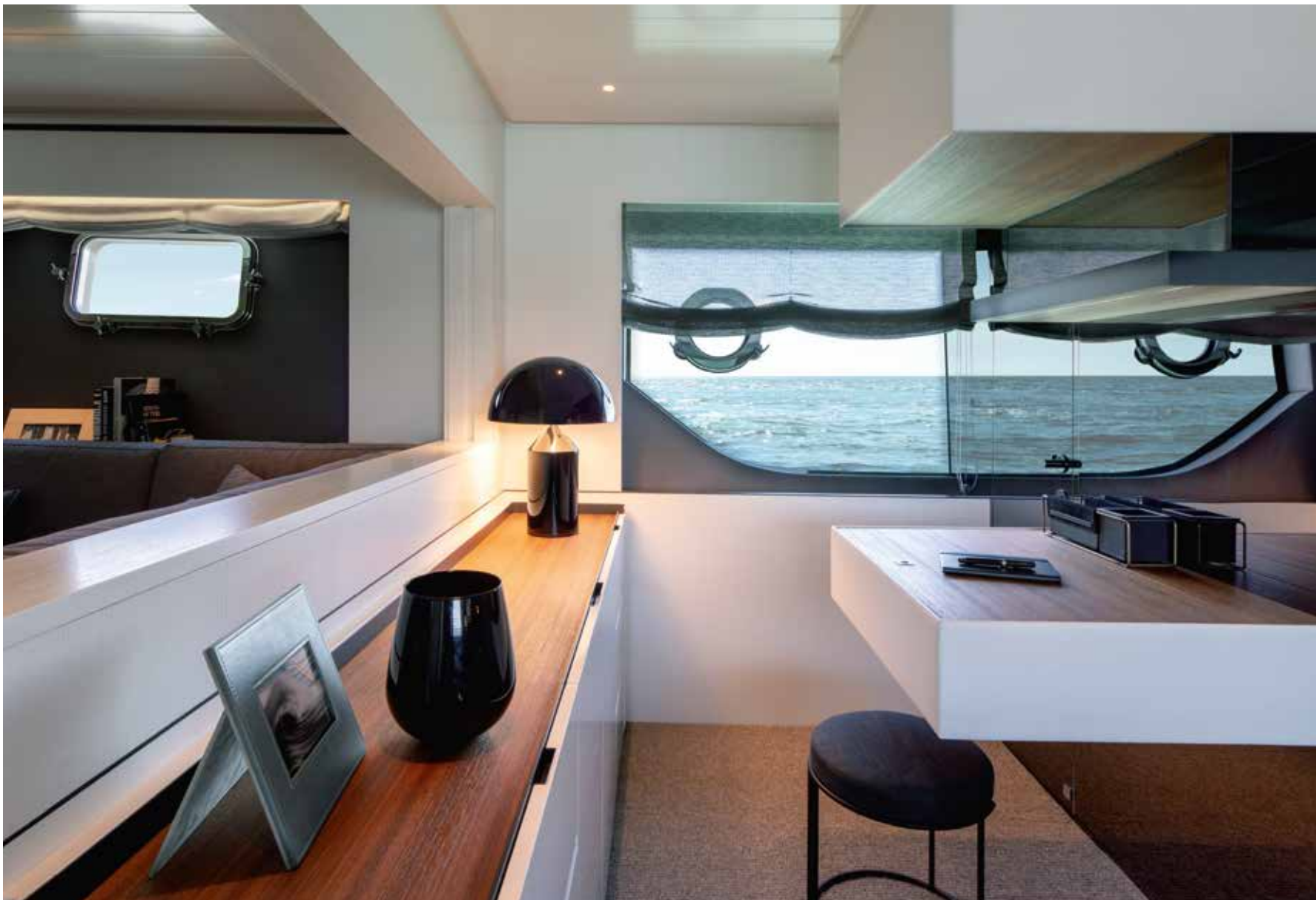




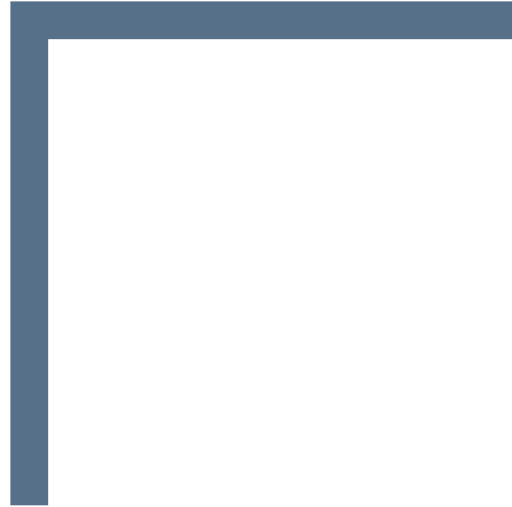


ENJOY MY  
UNDERSTATED  
LUXURY AND  
MY EXCELLENT  
WORKMANSHIP.

My design is minimalist  
from the viewpoint of forms  
and materials and maximalist  
from that of the on board experience.



The ocean surrounds and envelopes you  
as if it had touched the interiors.



## FEEL FREE TO RELAX.

I'm designed to make you feel at home.  
Here you will always find a warm  
and relaxing atmosphere, to enjoy  
every moment of life on board.





M Y E Q U

I P M E N T

MAIN DECK



LOWER DECK A



LOWER DECK B



LOWER DECK A  
with twin beds configuration



ORIGIN

## TECHNICAL SPECIFICATIONS

<b>LENGTH OVERALL (LOA)</b>	21,86 m 71 ft 7 in
<b>CE CERTIFIED LENGTH (LH)</b>	20,80 m 68 ft 2 in
<b>BEAM</b>	5,60 m 18 ft 3 in
<b>DRAFT@ FULL LOAD</b>	1,60 m 5 ft 2 in
<b>ENGINES</b>	2 x Volvo Penta IPS 1.200 D13 / 2 x 662 kW / 900 HP STD 2 x Volvo Penta IPS 1.350 D13 / 2 x 735 kW / 1.000 HP OPT
<b>DISPLACEMENT DRY</b>	40.000 kg +/- 5% 88.100 lbs +/- 5%
<b>CONDITION*</b>	
<b>DEADRISE</b>	14°
<b>FUEL CAPACITY</b>	4.200 l 1.109 gals
<b>FRESH WATER CAPACITY</b>	1.000 l 264 gals
<b>GRAY WATER CAPACITY</b>	300 l 80 gals
<b>BLACK WATER CAPACITY</b>	330 l 87 gals
<b>MAX SPEED</b>	28 kn +/- 5% **30 kn +/- 5%
<b>CRUISE SPEED</b>	25 kn +/- 5% **27 kn +/- 5%
<b>MAX NO. PASSENGERS</b>	16
<b>BERTHS</b>	6+2
<b>CLASS CERTIFICATION</b>	CE cat. B
<b>CONCEPT</b>	Luca Santella
<b>DESIGN</b>	Luca Santella & Zuccon International Project
<b>HULL DESIGN</b>	Luis T. Codega

\* The displacement data is calculated in accordance with the present specification.  
\*\* The data relating to the speed of the vessel refers to the OPT engines.



I'm designed for long journeys.  
I boast an extraordinary seaworthiness  
and excellent performances at all times  
of the day and night and in all  
weather conditions, in comfort and safety.









BLUE MARINE  
FOUNDATION

## THE RESPONSIBLE DEVELOPMENT OF BLUEGAME.

Responsible development is the driver of Bluegame's design decisions. As a Sanlorenzo brand, Bluegame contributes to the company's commitment to the logic of sustainability, in a continuous search for a combination of profound attention to design, a sophisticated high-tech approach and development carried out with respect for the environment and the society that surrounds it.

The responsible approach to the social and environmental sphere derives from the very nature of the group, shaped by various historical events, such as the unique link with local workers and the location of the headquarters and its construction sites within the Montemarcello nature reserve, precisely in Ameglia (SP), in an area of 135,000 square metres on the banks of the river Magra.

The construction site in Ameglia, due to the nature of its location, is covered by an Environmental Management System and a Health and Safety at Work Management System certified according to ISO standards. This allows Bluegame to operate by guaranteeing its employees the best working conditions

and compliance with current regulations. The site is also powered by self-produced renewable energy through an almost total coverage of solar panels.

The company's commitment also translates into design choices that unite and elevate all Bluegame yachts. This is the reason for the decision to equip them with the most efficient propulsion systems currently available on the market, the Volvo IPS, capable of reducing consumption by over 20%. In addition to this, there is the choice to use advanced materials and technologies that guarantee lightweight construction with reduced impact, such as carbon fibre, light wood for non-structural parts and the infusion lamination process for the hulls.

Particular attention has been paid to the energy efficiency of the product, with all Bluegame models designed to be covered with solar panels, which for some models can reach up to 30 square meters (56 panels). The models are also equipped with a grey and black water treatment system that allows them to be reused or discharged

overboard. Finally, the highly efficient thermal break glazing, which can be fitted to all BG and BGX models, insulates the interior environment and considerably reduces the consumption of air conditioning.

Over the years, the company has also promoted a series of pilot projects that have led to important applications on board, such as the use of naturally tanned leather and experimentation with balsa and basalt, i.e. recycled and recyclable materials, for internal compartmentation.

The sensitivity to environmental protection has led Bluegame to become a member of the Blue Marine Foundation (BLUE), a charity dedicated to the protection of the sea through measures that include the creation of marine reserves, the restoration of vital habitats and the development of sustainable fishing models.

As a brand of Sanlorenzo, Bluegame contributes to the commitment to achieve the 17 Sustainable Development Goals presented in Agenda 2030, the United Nations program.



# BLUEGAME

Via Armezzone, 3 | Ameglia (SP), Italy | +39 0187 618490 | info@bluegame.it | bluegame.it



