

SUPERYACHT

SANLORENZO

57
STE
EL/



57 STEEL























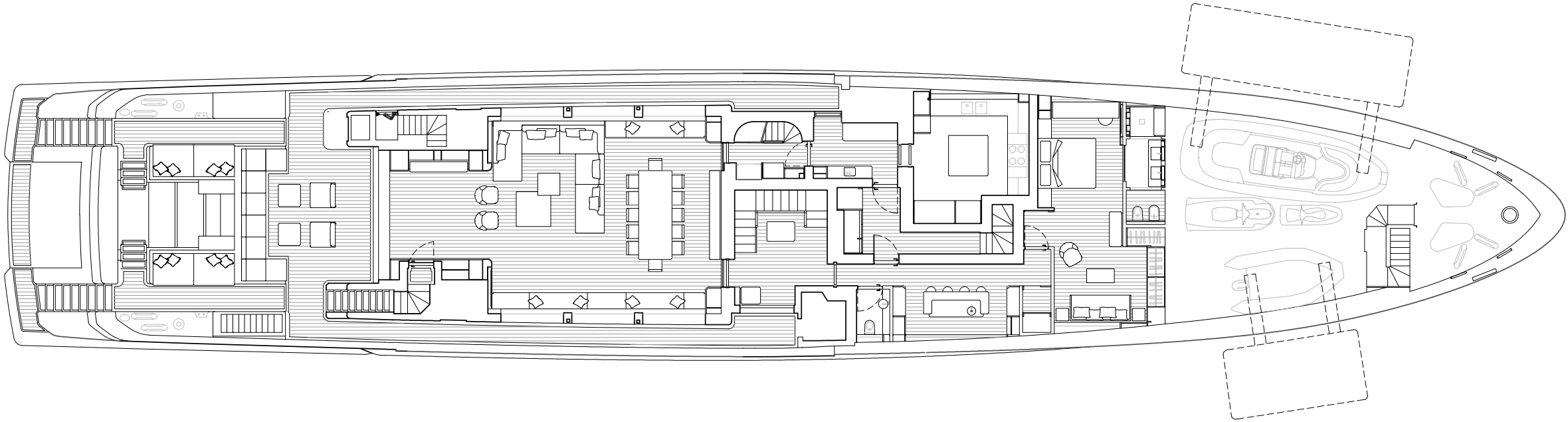






step on
board

57STEEL





18. Main deck – cockpit











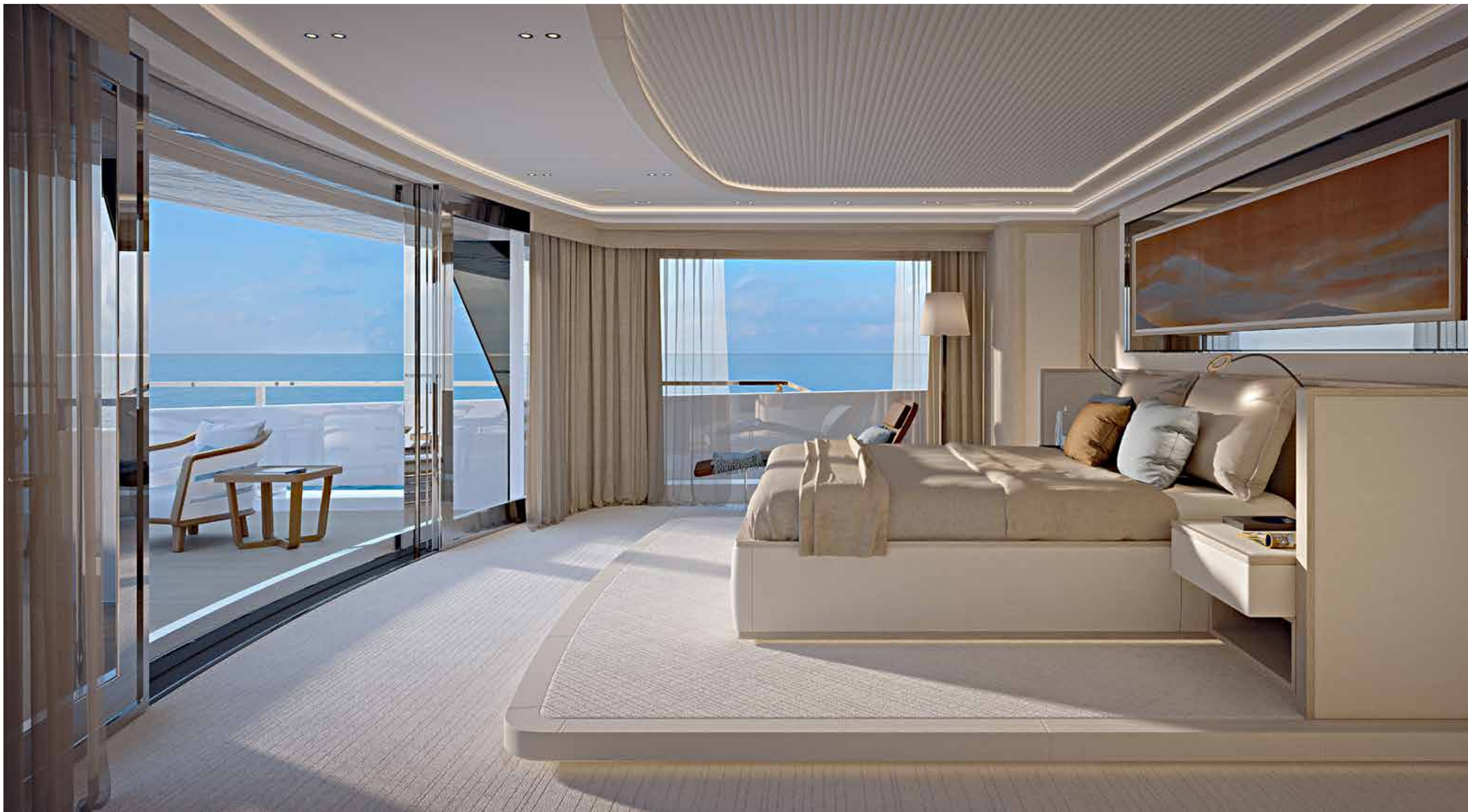
23. Main deck – dining area







26. Upper deck – owner's cabin



27. Upper deck – owner's cabin



28. Upper deck – owner's cabin





30. Upper deck – bow area



31. Upper deck – bow area

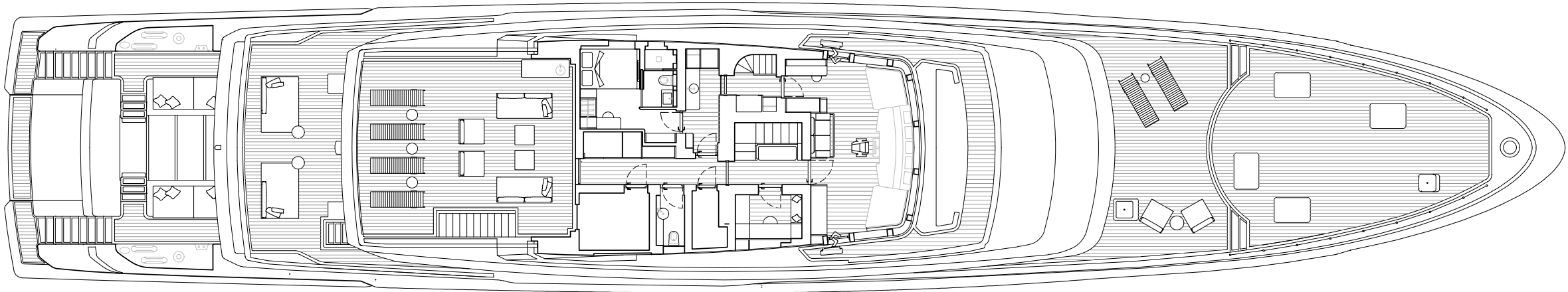


32. Upper deck – owner’s bathroom



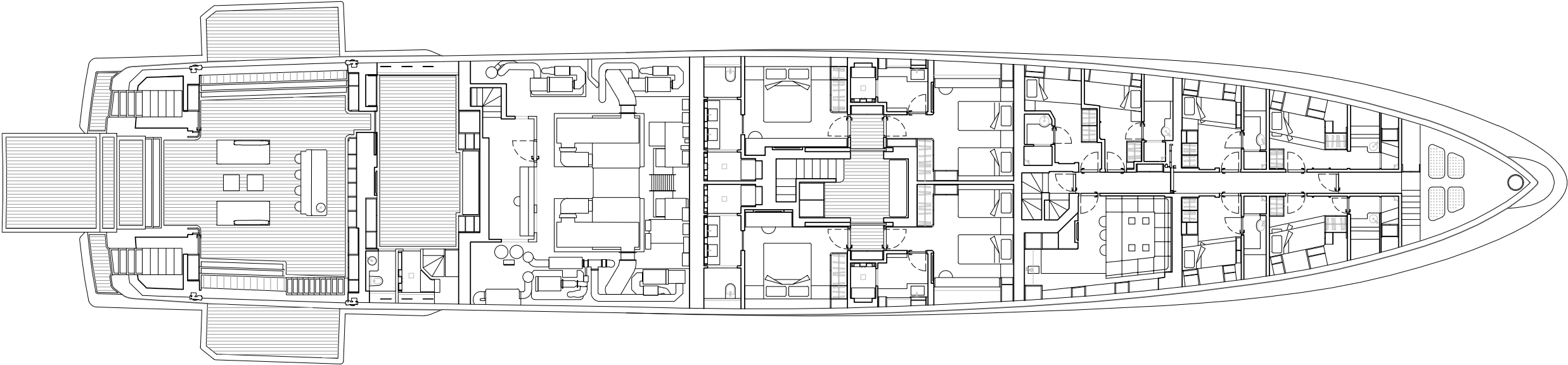
33. Upper deck – owner’s bathroom

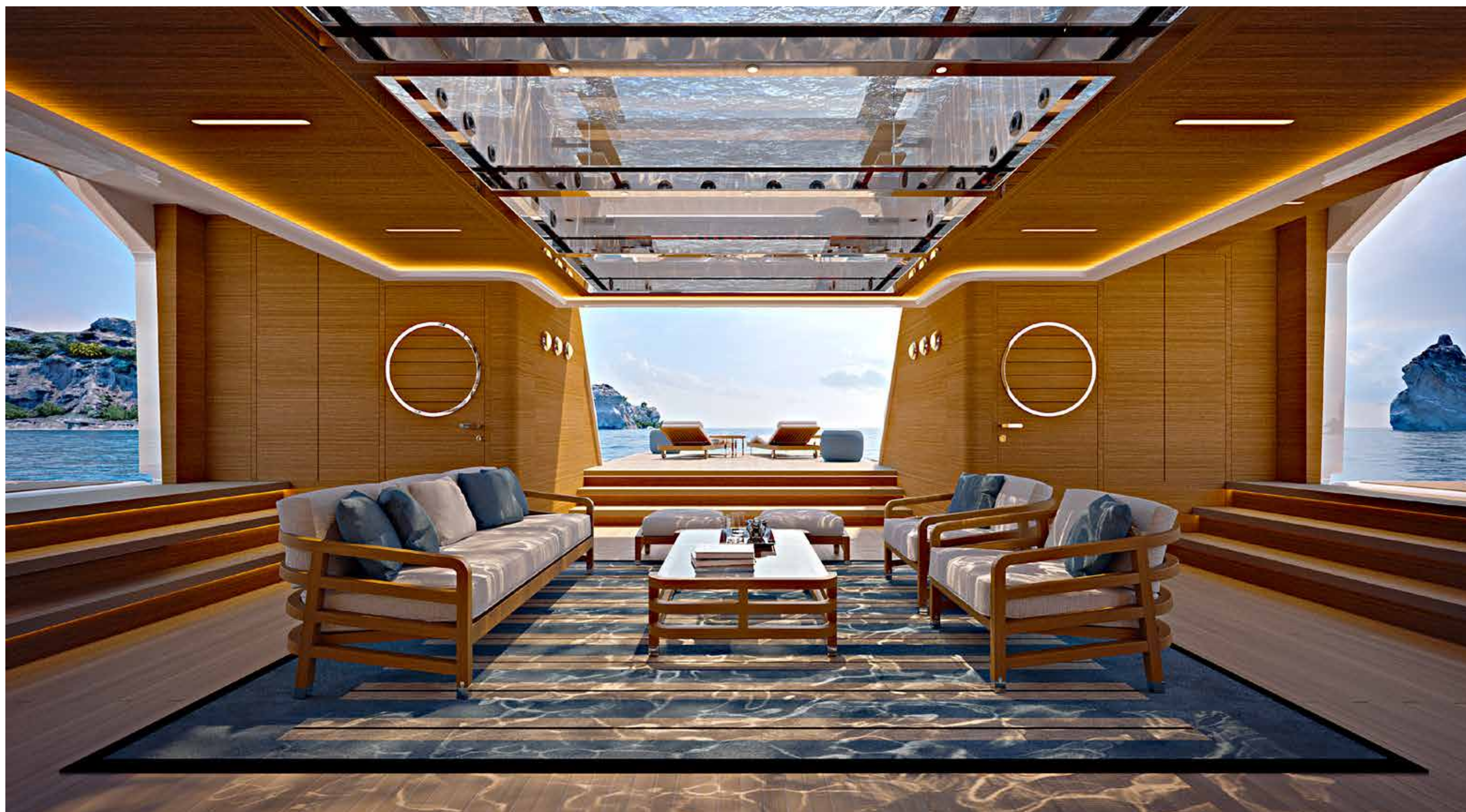






36. Lower deck – sun deck









Length Overall	56.50 m
Maximum beam	10.95 m
Draught @ full load	3.1 m
Gross Tonnage	1050 GT
Hull	Steel
Superstructure	Aluminium
Guest Accommodation	Up to 12 guest
Crew Accommodation	Up to 12 crew members
Engine	2 x CAT 3,512C (1500 kW)
Gensets	4 x 99 kW + 1 x 86 kW
Maximum Speed (approx.) (*)	16.5 kn
Comfort Speed (approx.) (*)	12.5 kn
Economic speed (approx) (*)	11 kn
Max range @ economic speed (approx.)	4,000 nm
Fuel capacity	80.000 l

*Technical data refer to a yacht with standard layout as described in the sales specification

This brochure shall not be regarded as a contractual offer regarding the sale of yachts from the shipyard to individuals or companies. All the information contained in this brochure, including without limitation any technical or performance data, pictures, and drawings, are mere indications with no contractual value.

This document is based on the information available at the time it is published. In spite of the commitment aimed at guaranteeing maximum possible accuracy, the information contained herein may not cover all the details and any technical-commercial modifications introduced after printing, or may describe features that are not present.